

Superior limbic keratoconjunctivitis (SLK)

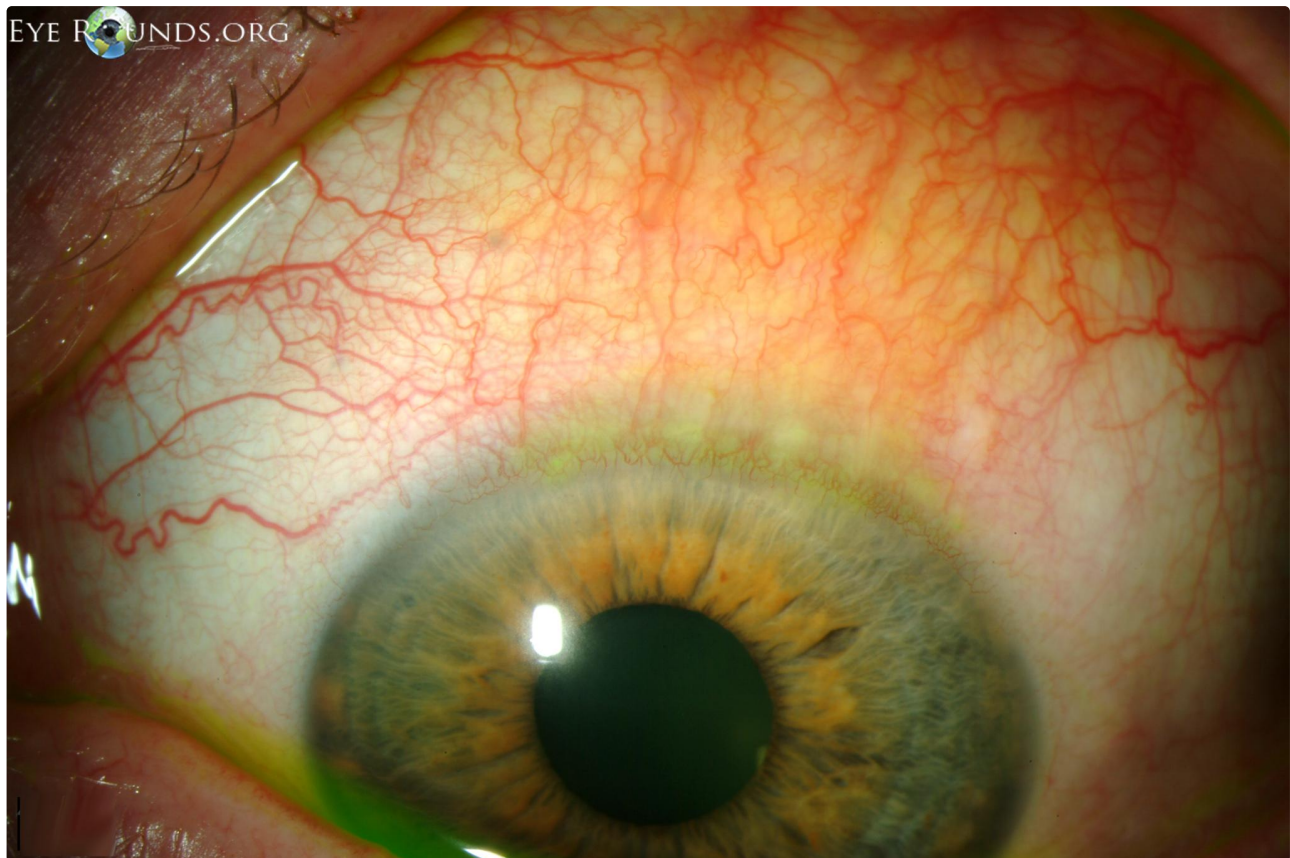
Category(ies): Cornea, External Disease

Contributor: [Jesse Vislisel, MD](#)

Photographer: Stefani Karakas, CRA

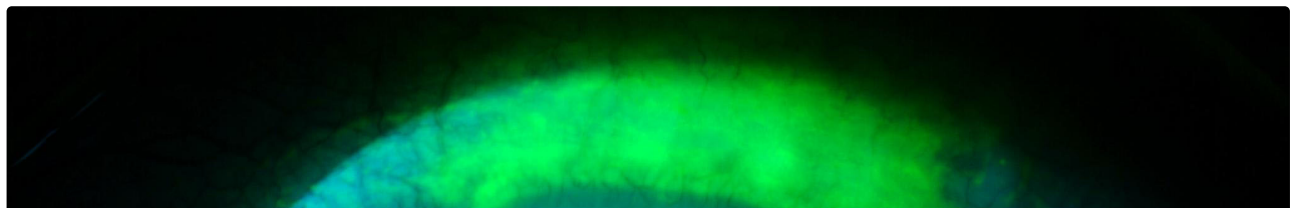


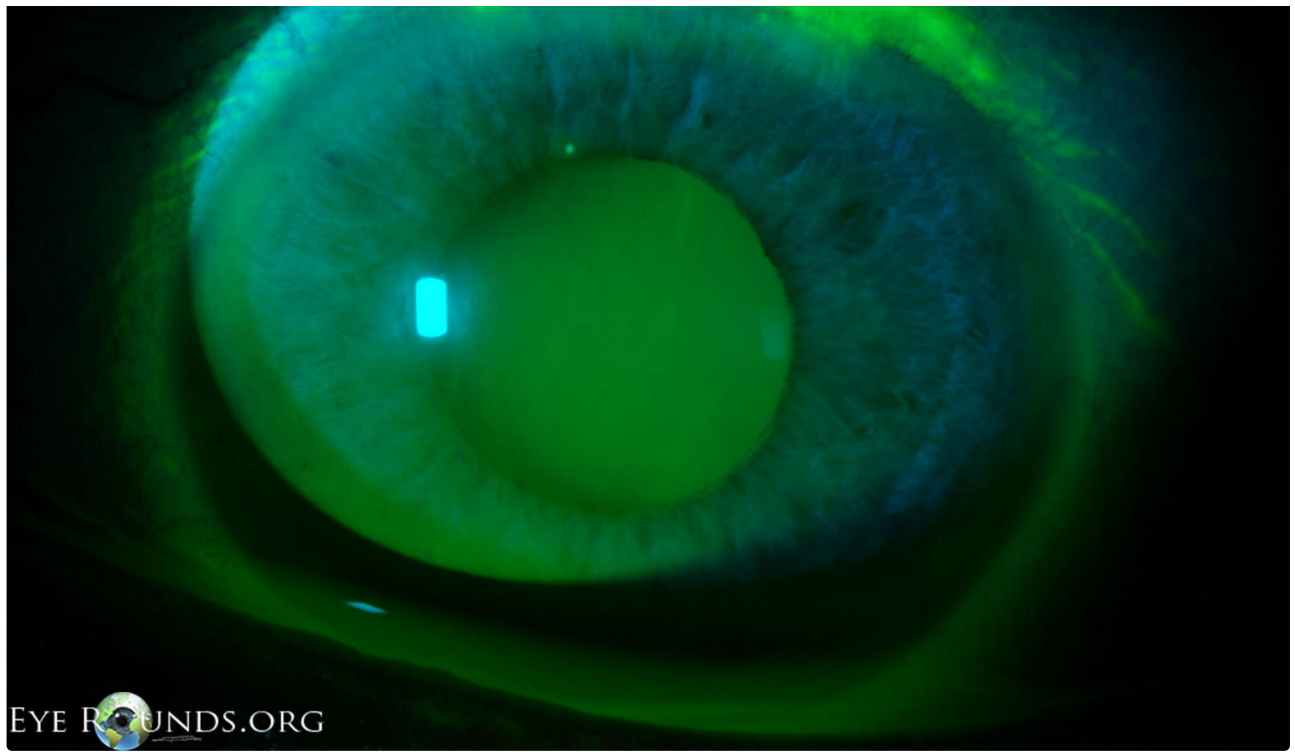
Superior limbic keratoconjunctivitis (SLK) is a chronic, recurrent condition of ocular irritation involving the superior limbus, bulbar conjunctiva, and tarsal conjunctiva. The etiology is unknown, but it may result from mechanical trauma related to the upper lid. The condition is associated with thyroid eye disease and contact lens wear. As seen in the photographs, there may be hypertrophy of the superior limbus, positive staining superior to the limbus, and injection and thickening of the superior bulbar conjunctiva. There may also be a papillary reaction of the superior tarsal conjunctiva and superior corneal filamentary keratopathy.



[Enlarge](#)

[Download](#)





 [Enlarge](#)

 [Download](#)

Image Permissions:



Ophthalmic Atlas Images by [EyeRounds.org](#), [The University of Iowa](#) are licensed under a [Creative Commons Attribution-NonCommercial-NoDerivs 3.0 Unported License](#).

Address

University of Iowa
Roy J. and Lucille A. Carver College
of Medicine
Department of Ophthalmology and
Visual Sciences
200 Hawkins Drive
Iowa City, IA 52242

[Support Us](#)

Legal

Copyright © 2019 The University of
Iowa. All Rights Reserved
[Report an issue with this page](#)
[Web Privacy Policy](#) |
[Nondiscrimination Statement](#)

Related Links

[Cataract Surgery for Greenhorns](#)
[EyeTransillumination](#)
[Gonioscopy.org](#)
[Iowa Glaucoma Curriculum](#)
[Iowa Wet Lab](#)
[Patient Information](#)
[Stone Rounds](#)
[The Best Hits Bookshelf](#)

EyeRounds Social Media

Follow



Receive notification of new cases,
[sign up here](#)
[Contact Us](#)
[Submit a Suggestion](#)